



MDT 6x6 Toyota Hilux

MAINTENANCE SCHEDULE



- IMPORTANT -

This manual gives an overview of the maintenance schedule for an MDT 6x6 Toyota Hilux. For complete detail on maintenance operations, please refer to Owner and Service Manuals for the base vehicle Toyota Hilux 4x4 and MDT 6x6 System.

Please note that this manual applies to all models and may include explanations for equipment not installed on your vehicle.

The specifications and descriptions were accurate at the time of issue. Since improvement is a constant goal of Multidrive Technology, we reserve the right to make changes at any time without notice and without incurring any obligation.

**MDT 6x6 Toyota Hilux
Maintenance Schedule**

SERVICE INTERVAL:

First of either Distance travelled or months past

Maintenance	T	Tighten and/or adjust as necessary
Operations:	I	Inspect and correct or replace as necessary
	R	Replace, change or lubricate
	L	Lubricate
	C	Cleaning



	MONTHS	3	6	12	18	24	30	36	42	48	54	60	66	72	78	84	90	96	102	108	114	120
		Km x 1,000	5	10	20	30	40	50	60	70	80	90	100	110	120	130	140	150	160	170	180	190
BASIC ENGINE COMPONENTS																						
1	V-ribbed drive belt (Diesel)																					
2	Engine oil		R	R	R	R	R	R	R	R	R	R	R	R	R	R	R	R	R	R	R	R
3	Engine oil filter		R	R	R	R	R	R	R	R	R	R	R	R	R	R	R	R	R	R	R	R
4	Cooling and heater system (see note 1)																					
5	Engine coolant – include intercooler coolant (Toyota Genuine SLLC) (see note 2)																					
6	Exhaust pipes and mountings																					
ELECTRICAL SYSTEM																						
7	Battery																					
FUEL SYSTEM																						
8	Fuel filter (Diesel)																					
9	Water sediment accumulator (Diesel)																					
10	Engine air cleaner filter (Diesel) (see note 3)																					
11	Air flow meter (MAF sensor) (Diesel) (see note 4)																					
12	Diesel smoke (Diesel)																					
13	Fuel tank cap, fuel lines and connections (Diesel)																					
CHASSIS AND BODY																						
14	Brake pedal and parking brake																					
15	Brake linings and drums																					
16	Brake pads and discs																					
17	Brake fluid																					
18	Clutch fluid (M/T)																					
19	Brake pipes and hoses																					
20	Vacuum pump for brake booster (Diesel) (see note 5)																					
21	Power steering fluid																					
22	Steering wheel and linkage																					
23	Lubricate propeller shaft		L	L	L	L	L	L	L	L	L	L	L	L	L	L	L	L	L	L	L	L
24	Tighten propeller shaft bolts		T	T	T	T	T	T	T	T	T	T	T	T	T	T	T	T	T	T	T	T
25	Drive shaft boots																					
26	Suspension ball joints and dust covers																					
27	Manual transmission oil																					
28	Automatic transmission fluid																					
29	Automatic transmission fluid cooler hoses and connections																					
30	Transfer oil (4x4)																					
31	Front differential oil (4x4)																					
32	Rear differential oil																					
33	MDT power divider oil		R																			
34	Front and rear suspensions (4x4)																					
35	Bolts and nuts on chassis and body (see note 6)																					
36	Accessory items (see note 7)																					
37	Tyres and inflation pressures																					
38	Rotate wheels																					
39	Balance front wheels																					
40	Driver's floor mat – fitment and retention																					
41	Lights, horns, wipers and washers																					
42	Seatbelt, webbing condition, buckle and retractor mechanism operation																					
43	Air conditioner filter																					
44	Air conditioner, including refrigerant level																					

Notes:

1. Check that the radiator and condenser are not blocked with leaves, dirt, or insects, and the hose connections for installation condition and corrosion.
2. Replace the engine coolant initially at 96 months or 160,000 km (whichever occurs first), then every 48 months or 80,000 km (whichever occurs first). Use Genuine Toyota Super Long Life Coolant (SLLC) or a similar high quality ethylene glycol based non-silicate, non-amine, non-nitrate, and non-borate coolant with long-life hybrid organic acid technology.
3. For Diesel engine vehicles frequently operating on unmade roads or extremely dusty conditions with dry air inspect every 5,000 km.
4. MAF sensor removal is not required for perform cleaning. Do not use chemicals etc to clean MAF sensor. Refer to repair manual for correct cleaning method.
5. Replace the blades with new ones. Never reuse the blades.
6. For seat mounting bolts, front and rear suspension retaining bolts and leaf springs retaining U-bolts.
7. Inspect for correct fitment. Check tension of retaining bolts for any heavy metal accessory (towbar, bulbar, side steps, etc.).

Reference: Hilux / Fortuner Owner Manual, Issue: 2203-04

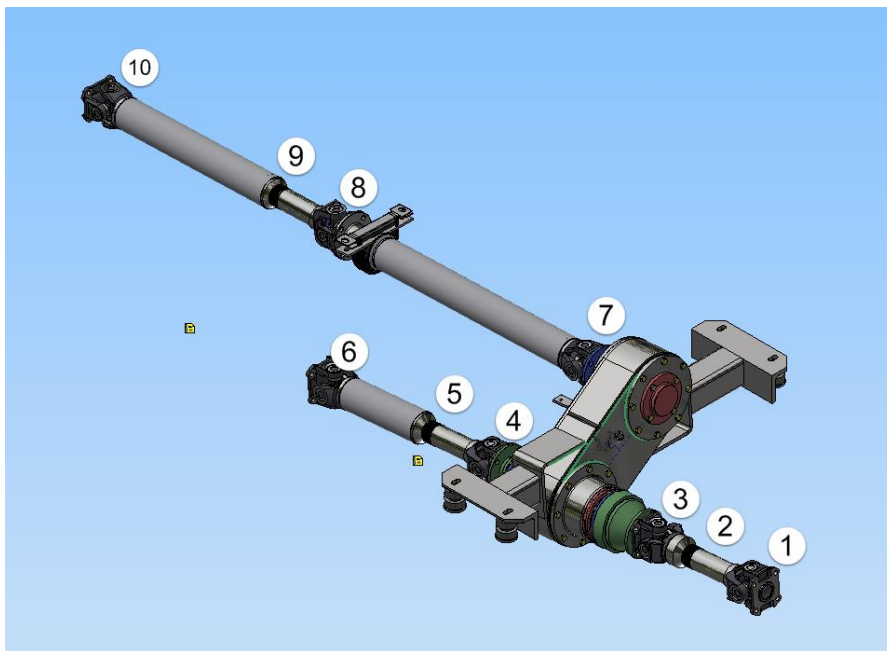
MDT 6x6 Specific Maintenance Operations

This schedule only applies to the MDT components on the vehicle and should be read in conjunction with the Toyota Service and Operating Manual.

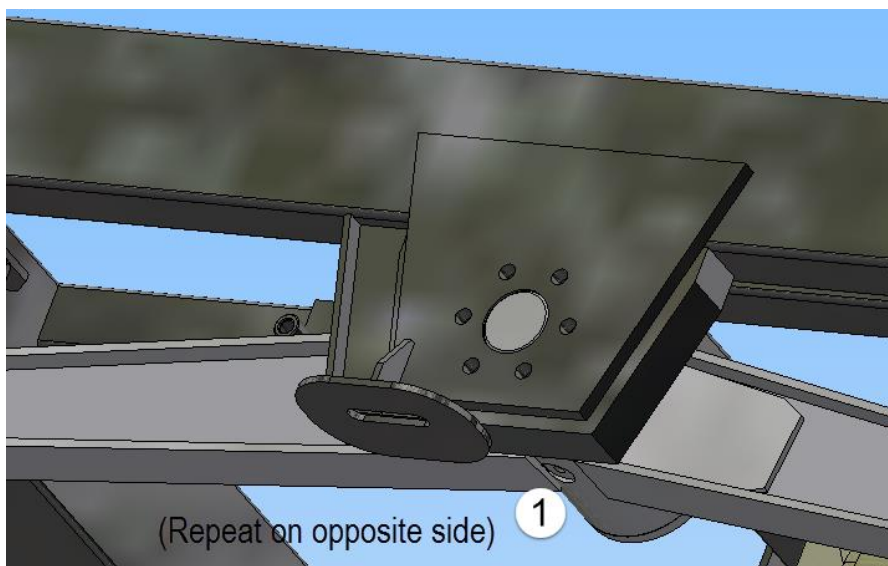
Grease Points

The following points should be lubricated at 10,000 km intervals or more frequently under severe conditions, per the Toyota Operators Handbook.

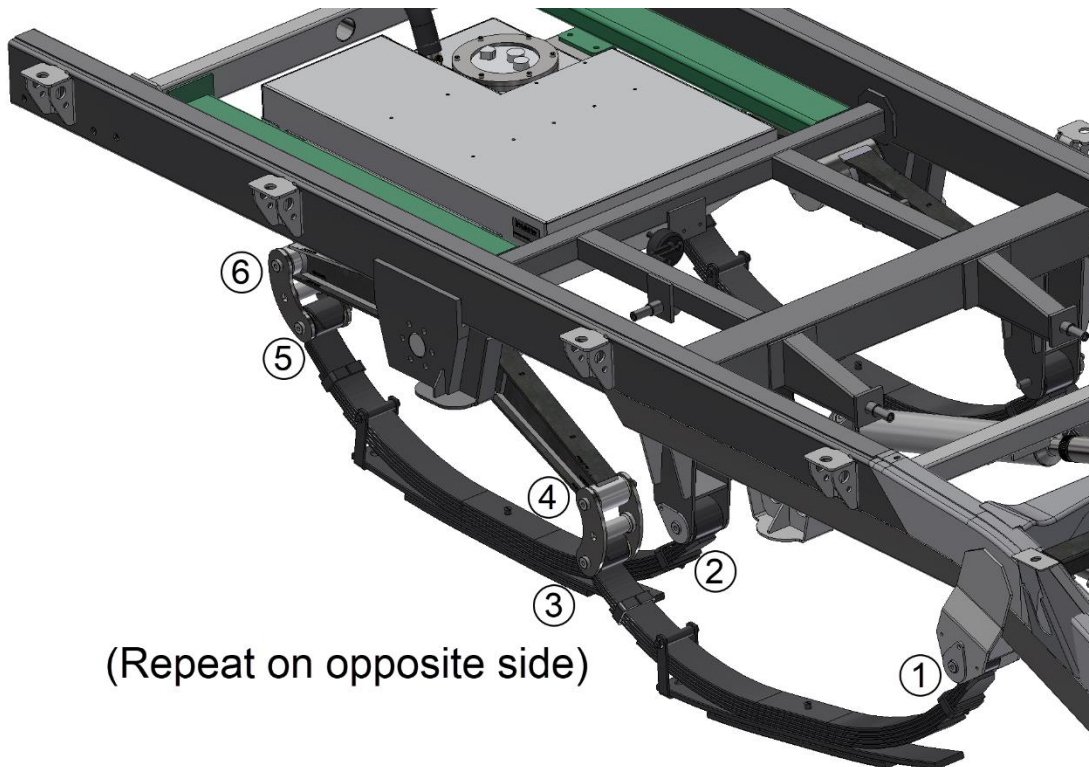
MDT Propeller Shafts (10 points)



Suspension load share beam pivots (2 points)



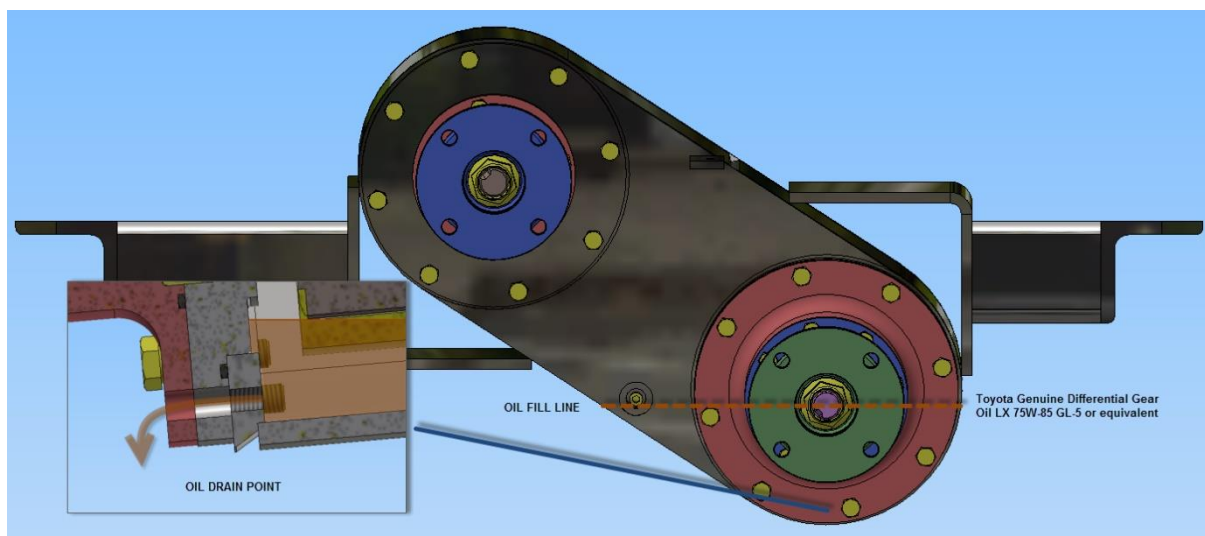
Suspension spring pins/bushes (12 points)



We recommend a high-quality grease with a molybdenum-disulphide lithium base for chassis lubrication.

MDT Power Divider

The power divider oil should be changed at the 5,000 km service. The level and condition should then be inspected at 20,000 km, before being replaced again at 40,000km. The level and condition should then be inspected at 20,000 km intervals.



DRAINING PROCEDURE - Remove the bolt from the bottom of the chain case (one of the 8 bolts holding the mid output bearing case) to drain, and refit when thoroughly drained.

FILLING PROCEDURE - Remove the oil level plug from the rear of the chain case. Toyota Genuine Differential Gear Oil LT 75W-85 GL-5 or equivalent, through the oil level hole until oil flows out. Refit the plug. The Power Divider runs the same oil as the Toyota Limited Slip differentials.

Regular inspection for contamination of all lubricants is recommended, and where apparent, service intervals should be reduced. This is particularly important after water crossings. The use of high-quality lubricants is an important element in obtaining the best performance and service life from the vehicle. Failure to adhere to these recommendations may severely reduce the life of the components and invalidate the warranty.